

# LogTag<sup>®</sup> TREL30-16CP

## Quick Start Guide

Version A

[www.logtagrecorders.com](http://www.logtagrecorders.com)

# Quickstart Guide Contents

---

Downloading LogTag Analyzer 3

Configuring your TREL30-16CP 5

Starting your TREL30-16CP 6

During Recording 7

Downloading Results 8

Compatible Accesories 9

# Downloading LogTag Analyzer

---

To download the latest LogTag Analyzer, open your browser and navigate to:



<https://logtagrecorders.com/software/LTA3/>

1. Click 'Go to downloads page' to take you to the download page.
2. Click 'Download Now' to start the download.
3. Click 'Run' or 'Save File' then double-click the downloaded file to open the LogTag Analyzer Setup Wizard.

**Warning:** Please ensure no other LogTag software is currently running on your computer before running the Analyzer software.

# Downloading LogTag Analyzer continued...

---

1. Follow the on-screen prompts to install LogTag Analyzer.
2. Click 'Finish' to exit the LogTag Analyzer Setup Wizard.

Note: If you already have LogTag Analyzer installed, please see whether you need to update to the latest version by clicking 'Check Internet for updates' from the 'Help' menu.

# Configuring your TREL30-16CP

---

Dock your TREL30-16CP into a LogTag interface cradle then connect your interface cradle to your computer via the provided USB cable. The USB socket on the interface is located at the back of the interface cradle.



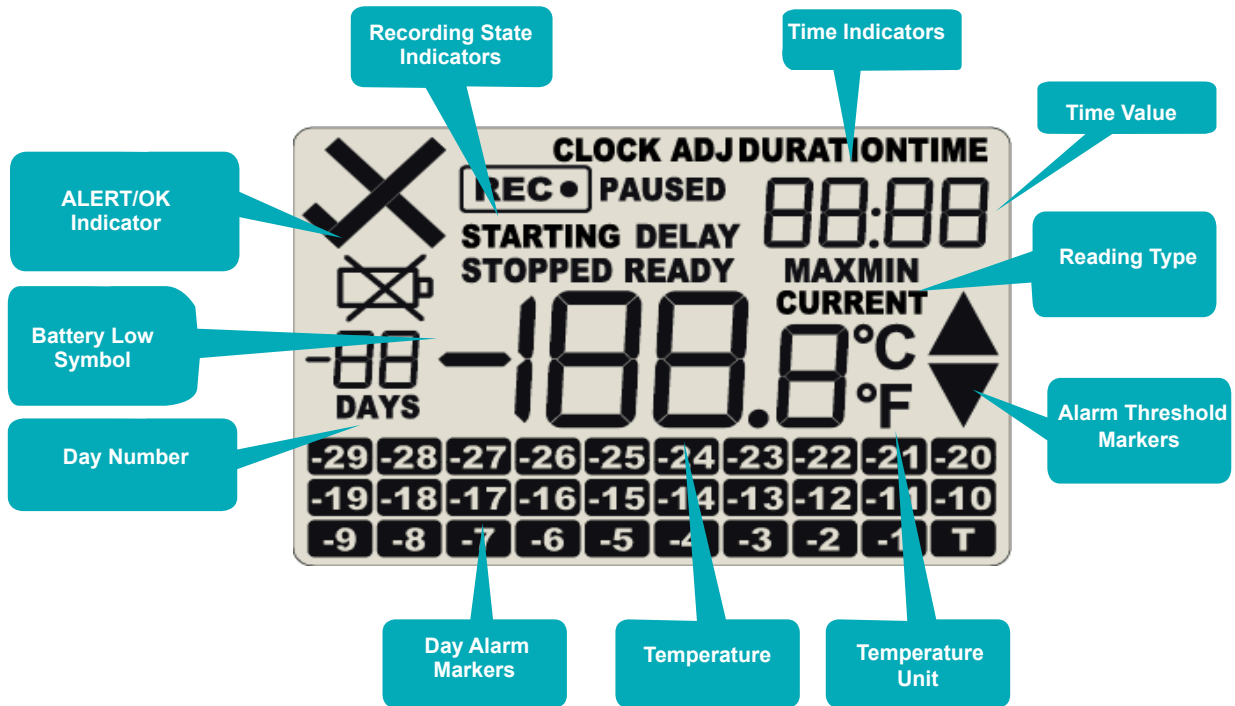
1. Open LogTag Analyzer.
2. Click 'Configure' from the 'LogTag' menu or click the 'Wizard' icon.
3. Adjust your logger configuration settings as required. For more information on configuration settings, please refer to [Configuring TREL30-16CP](#) in the Product User Guide or press 'F1' for help from your keyboard.

(**Smart Probe:** To enable smart probe logging, navigate to the 'Additional Features' tab then select 'Enable Smart Probe')

4. Click 'Configure' to upload the configuration settings to the logger.
5. Click 'Close' to exit the configuration page.

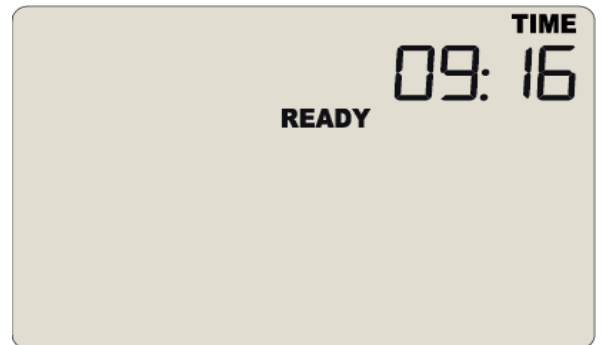
# Starting your TREL30-16CP

## Display overview:

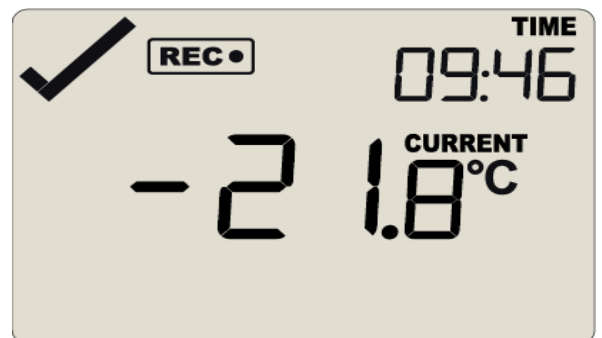


Please ensure the sensor is connected before starting your TREL30-16CP.

Press and hold the START/  
CLEAR/STOP button.



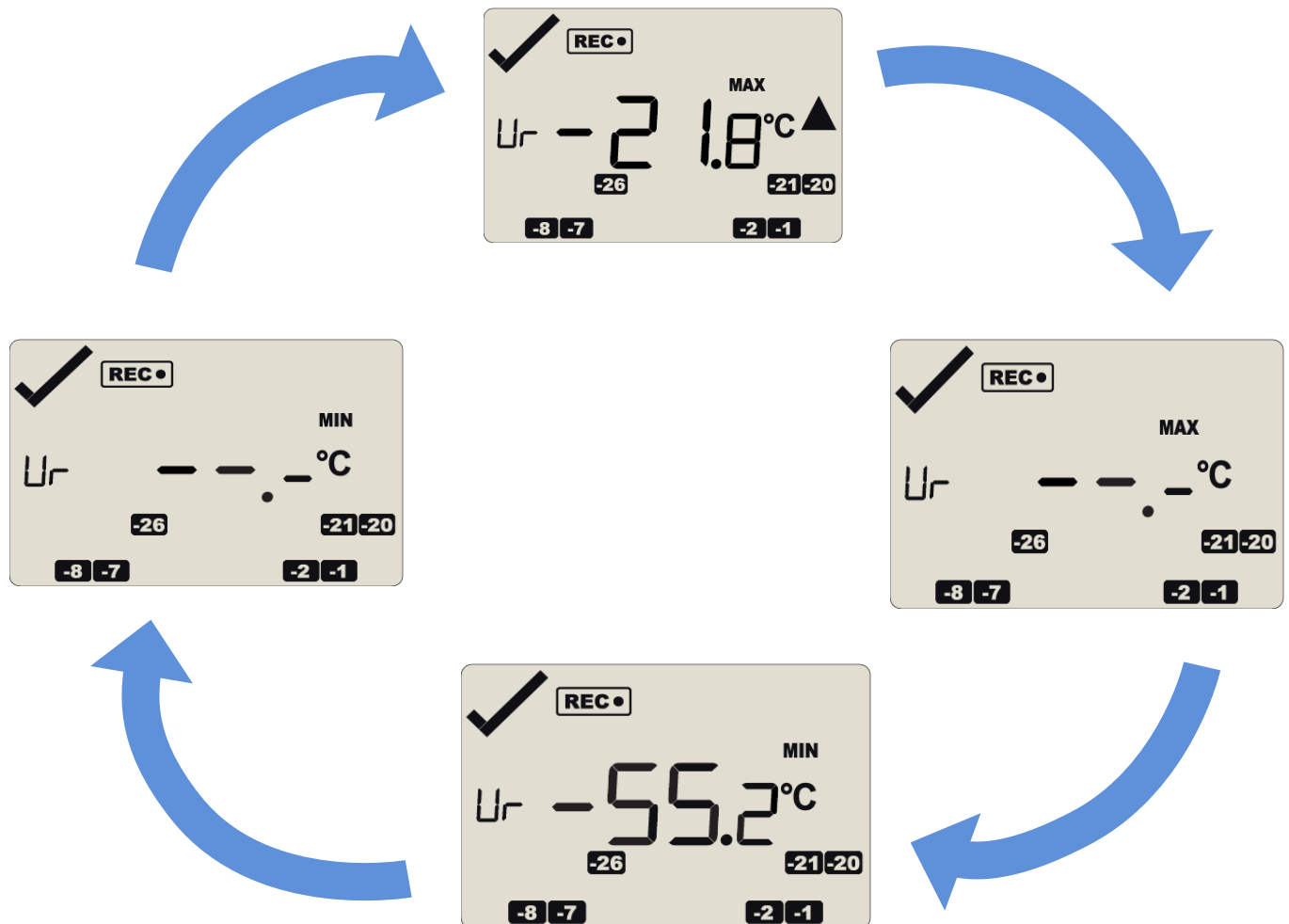
Continue to hold while  
'STARTING' is shown.  
Release the button when  
'READY' disappears.



The TREL30-16CP now  
records temperature data.

# During Recording

## Reset Trip Min/Max Temperatures:



The currently stored Min/Max temperature values can be reset at any time while the unit is recording, but not once the unit has been stopped. To reset the values, please refer to the [Product User Guide](#).

To view other information about clearing alarms and reviewing Min/Max trip temperatures, please also refer to the [Product User Guide](#).

# Downloading Results

---

Dock your TREL30-16CP into any LogTag interface cradle. Connect your interface cradle to your computer via the USB cable. The USB socket on the interface is located at the



1. Open LogTag Analyzer.
2. Click 'Download' from the 'LogTag' menu or press F4. After a few seconds, the downloaded data will appear. Data can be displayed in Report-, Chart-, Data-, Summary- or Day Summary formats by clicking the tabs at the bottom of the chart dialog. Data can also be saved in a number of formats including TXT, PDF, HTML and CSV for import.
3. Click 'Close' to exit the download page.

By default, auto-download is enabled in LogTag Analyzer so when you open the program, data results will be displayed after connecting to the computer.

# Accessories

---

## Required:

The TREL30-16CP requires these items for proper functioning



CP11 Smart Probe  
(Reccomended)

Or



ST10 External Probe

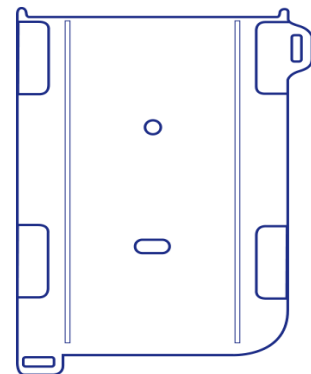


LTI Interface

## Optional:



Buffer assembly  
(Not included)



Wall mount  
(Not included)